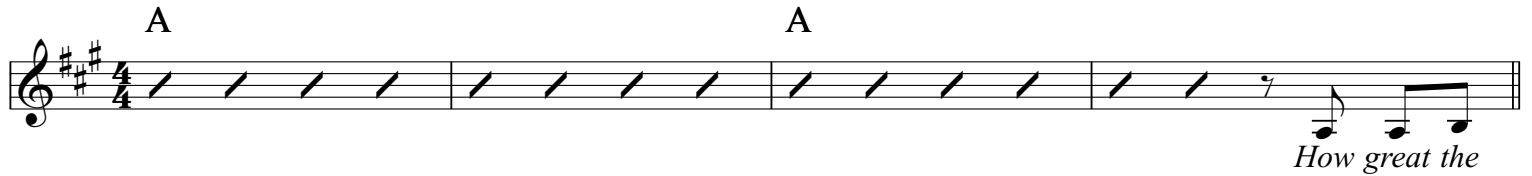


# Living Hope

Bethel - A

♩ = 72



30 2. D A E F#m D A E F#m

lu - jah, praise the One who set me free, hal-le - lu - jah, death has lost its grip on me. You have

34 D A E F#m D E A

bro-ken eve-ry chain, there's sal - va-tion in Your name, Je-sus Christ, my liv - ing hope.

38 A A E D F#m

Then came the morn-ing that sealed the prom-ise, Your bur-ied bod - y be-gan to -

42 E Sing 8va On Repeat A E D E 1. A

-breathe out of the si-lence, the roar-ing Li-on de-clared the grave has no claim on me.

47 2. F#m D E A Actual Pitch

me, Je - sus Yours - is the vic - to - ry. Hal - le -

51 D A E F#m D A E F#m

lu - jah, praise the One who set me free, hal-le - lu - jah, death has lost its grip on me. You have

55 D A E F#m D E

bro-ken eve - ry chain, there's sal - va-tion in Your name, Je - sus Christ, my liv - ing

58 1. A 2. F#m D E A

hope. Hal - le - hope, Je - sus Christ, my liv - ing hope.